



HEALTH AND WELLBEING BOARD: NOVEMBER 20, 2014

REPORT OF THE DIRECTOR OF HEALTH AND CARE INTEGRATION

REVIEW OF THE EFFECTIVENESS AND WORKING ARRANGEMENTS

OF THE INTEGRATION EXECUTIVE

Purpose of the Report

1. The purpose of this report is to consider the effectiveness and working arrangements of the Integration Executive after six months of operation, in line with the Integration Executive's terms of reference.

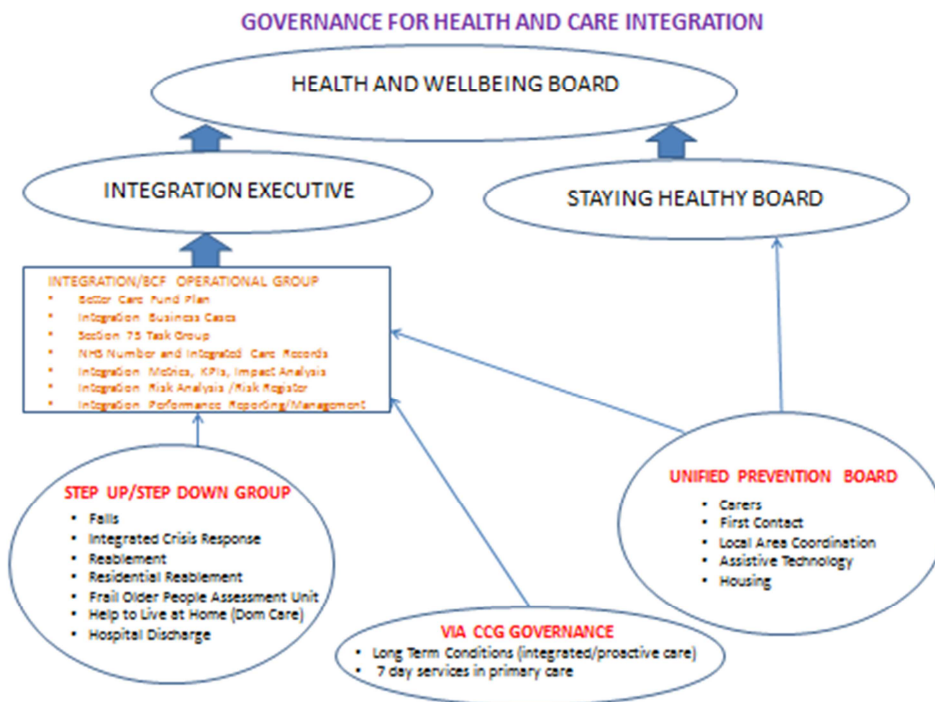
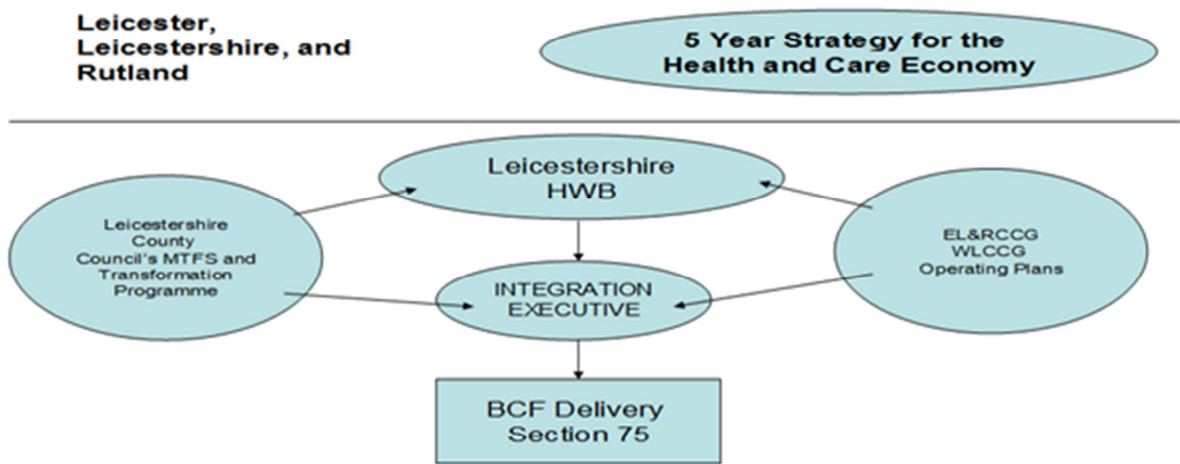
Policy framework and previous decisions

2. In February 2014, the Health and Wellbeing Board approved the establishment of the Integration Executive to oversee the day to day delivery of the integration programme, with quarterly reporting into the Health and Wellbeing Board.
3. The Integration Executive has been meeting since from March 2014 on a monthly basis and has led the work to develop and deliver the Better Care Fund Plan and pooled budget.

Background

4. The Integration Programme incorporates the Better Care Fund plan/priorities and a number of other integration priorities across the partnership, building on good foundations of joint working established over a number of years between the council and NHS partners. This has included existing pooled budgets in areas such as learning disability services.
5. It is timely to review the effectiveness of the Integration Executive in delivering its role and functions at this stage, especially as we are now moving from integration planning into delivery.
6. The Integration Executive is supported by an operational group comprised of representatives from across the partner agencies which has focused on digesting policy, BCF planning, submission and assurance, integration programme performance reporting, metrics and KPIs, the development of the section 75 agreement, integration programme risk management and programme management.

7. The operational group has also developed the infrastructure and governance for individual projects feeding into the integration programme, managed programme level resources and ensured close working with other programme management teams within the health and care economy such as the Better Care Together Programme Office and those within clinical commissioning groups.
8. See the two diagrams below which show the governance arrangements for the integration programme and how the work connects into the wider LLR wide work.



Proposals

9. In order to evaluate the operational effectiveness of the Integration Executive, members of the Integration Executive, members of the Health and Wellbeing Board, and members of the Integration Operational Group will be asked to complete a brief electronic survey which will cover the following questions:

- How effective has the group been generally in terms of delivering against the terms of reference as set out in March (a copy of the terms of reference will be provided for reference).
- What has worked well from your point of view?
- What has not worked well from your point of view?
- What do you consider to be the main achievement(s) in our progress to date?
- What has disappointed you in the group's progress to date?
- Do you have any specific recommendations in terms the role/duties/membership of the Integration Executive at this stage?
- What would most help the group develop further and perform more effectively over the next 6-12 months?

Next Steps and Timescales

10. The survey will be issued and analysed during December with the outputs reported to the Integration Executive and Health and Wellbeing Board meetings in January 2015.

Recommendations

11. The Health and Wellbeing Board is asked to:

- Approve the approach to gathering feedback on the effectiveness of the Integration Executive
- Provide any feedback on the proposed questions for the survey
- Receive the findings and proposed recommendations arising from this feedback at the next meeting of the Health and Wellbeing Board (January 22, 2015)

Officer to contact:

Cheryl Davenport
Director of Health and Care Integration (Joint Appointment)
Cheryl.davenport@leics.gov.uk
0116 305 4212

This page is intentionally left blank