



Shining the
light on

PARITY OF ESTEEM

Parity of esteem for people with severe mental illness



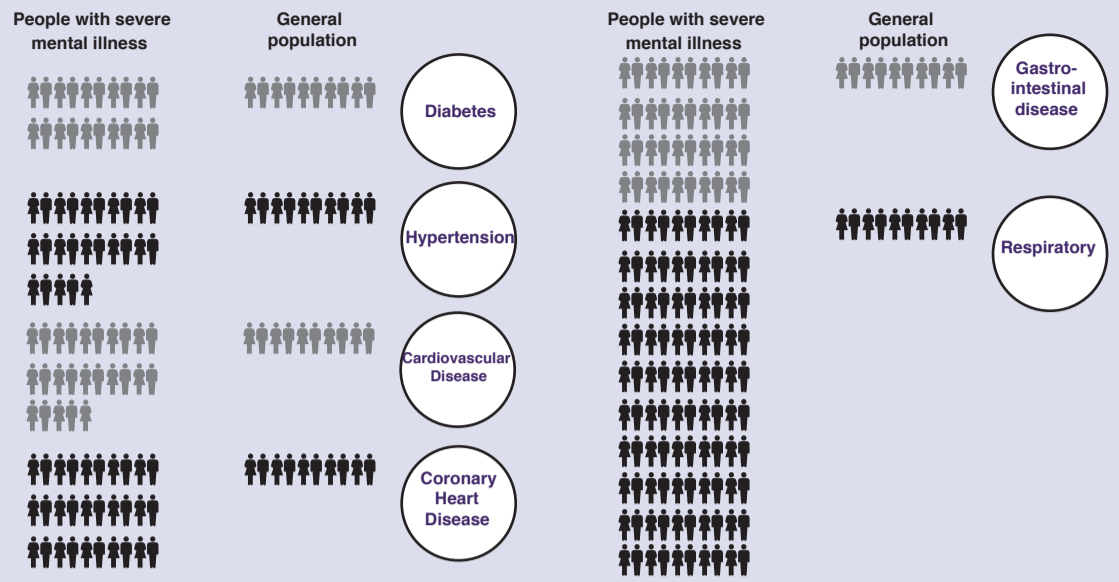
The **life expectancy** of people with mental health problems is **significantly lower** than average. Men with a mental health problem die **11 years** earlier than average and women die **10 years** earlier than average.

People with schizophrenia are:

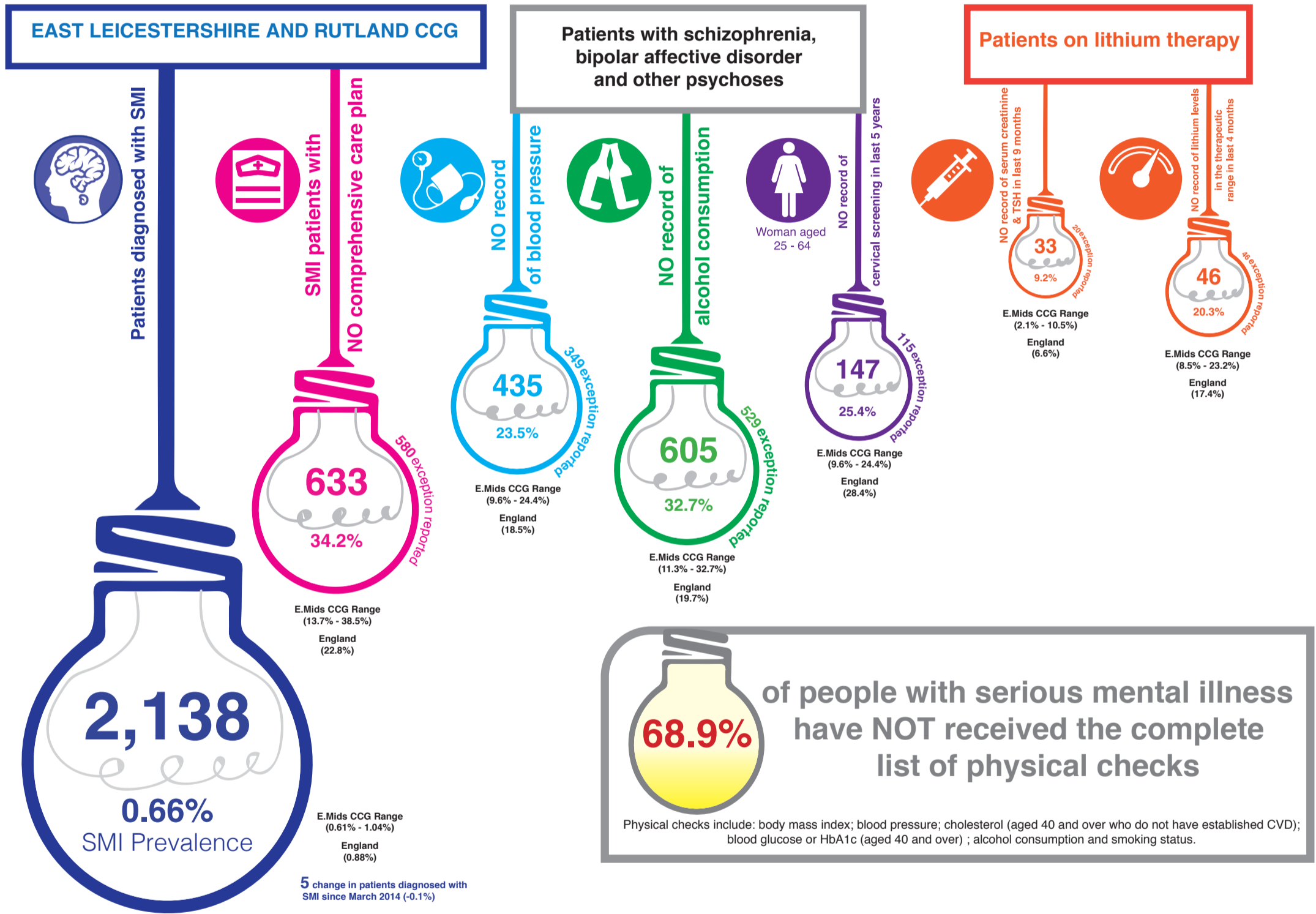
- 2x** more likely to die from cardiovascular disease.
- 3x** more likely to die from respiratory disease.

Smoking is the single biggest factor in **reduced life expectancy** in people with psychosis
40% of this group are smokers
42% of all cigarettes are smoked by someone with a mental illness.

Relative physical health risks for people with SMI



Severe mental illness in primary care 2014 - 2015



Comparative emergency admission rates for long term conditions

	Crude admission rate per 10,000 population		Admission Rate Multiplier
	SMI	Non SMI	
Cardiovascular Disease	753.0	90.2	8.3 CCG Range 5.4 - 11.9
COPD	304.0	17.7	17.2 CCG Range 4.7 - 17.2
Diabetes	28.1	5.0	5.6 CCG Range 2.3 - 28.8



Produced by East Midlands Clinical Networks