



## **HEALTH AND WELLBEING BOARD: 5<sup>th</sup> MAY 2016**

### **REPORT OF THE DIRECTOR OF PUBLIC HEALTH**

#### **LEICESTERSHIRE'S EMERGING APPROACH TO SOCIAL PRESCRIBING**

##### **Purpose of report**

1. The purpose of this report is to inform the Health and Wellbeing Board of the work being undertaken to develop a consistent approach to social prescribing across Leicestershire and to seek endorsement of the emerging approach.

##### **Links to the local Health and Care System**

2. A consistent approach to social prescribing has been identified as one of the priorities for the Unified Prevention Board, one of the pillars of the Better Care Fund. Social prescribing is also a key element within the prevention strand of the Sustainability and Transformation Plan.

##### **Recommendation**

3. The Health and Wellbeing Board is asked to:-
  - (a) note the work to coordination approaches to social prescribing;
  - (b) endorse the emerging model for social prescribing in Leicestershire.

##### **Background**

4. Social prescribing is defined as “a means of enabling primary care services to refer patients with social, emotional or practical needs to a range of local, non-clinical services, often provided by the voluntary and community sector.”
5. In practice this means that GPs, nurses or other healthcare practitioners work with patients to identify non-medical opportunities or interventions that will help them adopt healthier lifestyles or improve wider social aspects of their lives. The resulting services that patients can choose could include everything from debt counselling, support groups and walking clubs, to community cooking classes and one-to-one coaching.
6. Social prescriptions can be seen as a natural extension to ‘information prescriptions’ – which are tailored information given to patients to help them make informed choices about their care and access a wider range of services, such as social care, housing and leisure services.

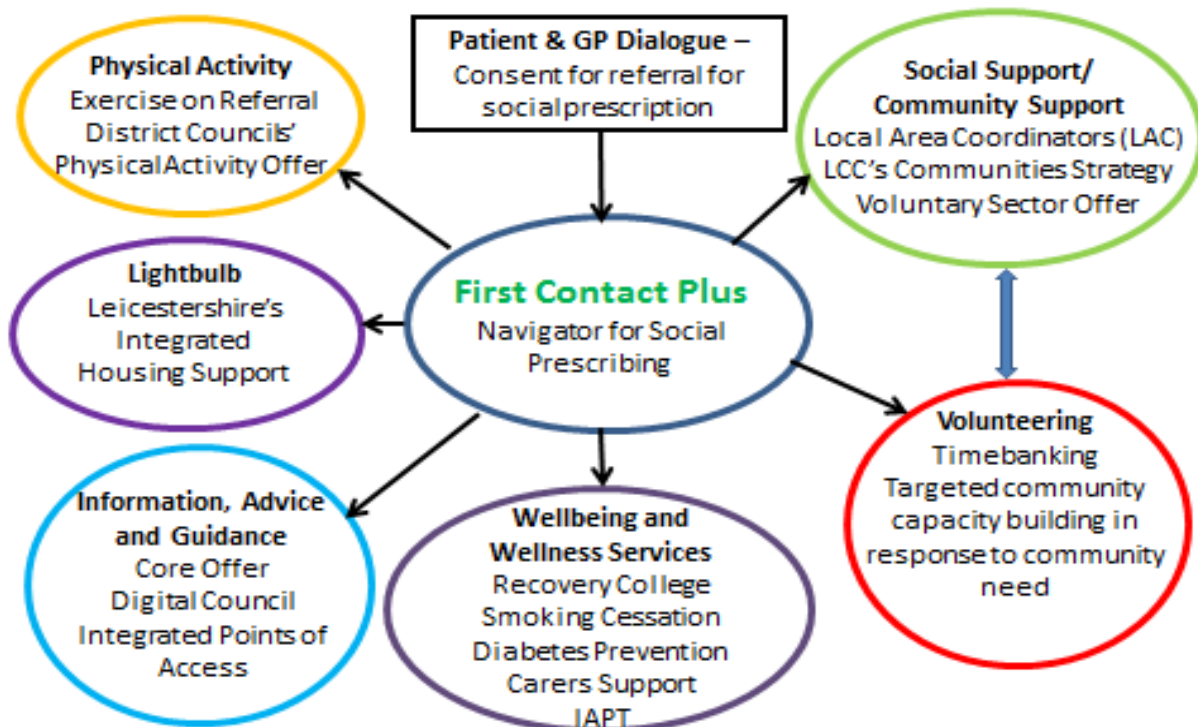
7. Within Leicestershire a number of concerns and ‘must-dos’ have been expressed by partners in relation to social prescribing. These include:
- GP concerns about duplication of initiatives and services across partner
  - Better Care Fund obligations
  - Unclear links and methodologies
  - The need for better patient / citizen targeting
8. Under the Unified Prevention Board we have sought to address these by agreeing a shared model and vision for social prescribing.

### Draft Shared Vision

9. Our vision for social prescribing is that: ‘We will work together to create a coherent social prescribing offer across Leicestershire that will benefit citizens by allowing them greater access to our menu of services and community resources, to enhance their health and wellbeing’.
10. Our unified prevention offer will describe a clear, consistent menu of services that are on offer in each community, with First Contact Plus as the coordinating “front door” for accessing a range of social prescribing solutions. Figure 1.

Figure 1

### Emerging Model for Social Prescribing



**Next steps**

11. A Social Prescribing action plan will be developed for the Unified Prevention Board (UPB). This will cover:
  - Regular reporting and feedback timetable on progress
  - Initial thoughts about targets and milestones
  - Creating a flow diagram to show collective working:
    - Using First Contact Plus as a front door
    - Exit strategies and handovers
    - Referral processes
    - Show how we target certain populations
12. A review of related social prescribing developments within Leicestershire to establish where further integration and efficiencies can be achieved will be completed by August 2016.

**Resource Implications**

13. Services within the social prescribing framework are funded through core budgets or BCF (Lightbulb and Local Area Co-ordination). No other additional resource requirements have been identified.

**Officer to Contact**

Mike Sandys  
 Director of Public Health  
 Telephone: 0116 395 4239  
 Email: mike.sandys@leics.gov.uk

**Relevant Impact Assessments****Equality and Human Rights Implications**

14. Developments within the BCF Plan, such as social prescribing, are subject to equality impact assessment and the evidence base supporting the BCF Plan has been tested with respect to Leicestershire Joint Strategic Needs Assessment.

**Partnership Working and associated issues**

15. The delivery of the BCF Plan, including the emerging model for social prescribing, is dependent on close collaborative working form Health and Wellbeing Board partners.
16. The delivery of the Leicestershire BCF ensures that a number of key integrated services are in place and contributing to the system wide changes being implemented through the 5 year plan to transform health and care in Leicestershire, known as Better Care Together.

This page is intentionally left blank