

HEALTH AND WELLBEING BOARD: 20 JULY 2017**POSITION STATEMENT FROM THE CHAIRMAN****Better Care Fund Guidance – Important Update**

NHS England, the Department of Health (DH) and Department for Communities and Local Government (DCLG) have published the [Integration and BCF planning requirements for 2017-19](#).

The document sets out the detailed requirements for local BCF plans, based on the 2017-19 [Integration and BCF policy framework](#) published by the DH and DCLG on 31 March 2017.

The planning requirements indicate that new targets are required for delayed transfers of care across local government and the NHS, with each local area required to submit draft DTOC targets by July 21. At the time of writing this position statement work is already underway across LLR in order to meet this requirement.

The Better Care Support team is publishing FAQs and further guidance for officers involved in submitting DTOC targets and final BCF plans, including the process and timetable for assuring plans submitted from each HWB Board area. A set of key lines of enquiry (criteria) that each plan will be assured against is also expected to be published shortly.

The submission date for BCF plans is 11 September. The next scheduled meeting of the Health and Wellbeing Board is 21 September.

The Health and Wellbeing Board has already delegated the approval of the local BCF plan to the Chief Executive, following consultation with me as Chairman of the Health and Wellbeing Board, with day to day work overseen by the Leicestershire Integration Executive.

I have asked officers to prepare a summary highlighting any changes that have been made in the light of the final guidance. This will be circulated to all members of the Board and you will be asked if you are happy for the delegation to be used or if you would prefer an extraordinary meeting of the Board to be called.

The Integration Executive meets on 1 August and again on Thursday 7 September. Their September meeting will be used to finalise the BCF Plan ahead of the 11 September national deadline.

Health and Wellbeing Board Development Session: 31 July

The next Board Development Session takes place on 31 July at 3pm in the Framland Committee Room at County Hall. The purpose of the session is as follows:-

- a) To receive an update on the development of Integrated Locality Teams (one of the STP areas where the Health and Wellbeing Board has a lead role);
- b) To co-design the Delivery Plan for the Joint Health and Wellbeing Strategy;
- c) To contribute to the development of the Children and Young People's Plan for Leicestershire;
- d) To contribute to the development of the Whole Life Disability Strategy;

I look forward to seeing you all there.

Health Profiles 2017

Public Health England has published the Health Profiles for 2017. I'm pleased to be able to report that, overall, Leicestershire County has above average health outcomes with our local authority districts rated in the top 10 nationally for three indicators in 2017. Leicestershire performs well in many indicators, with 20 that perform significantly better than the England average,

However, Leicestershire's local authority districts are also rated in the worst 10 nationally for three indicators. There is not an even spread in terms of performance across all local authorities in Leicestershire and there is room to improve the overall health of Leicestershire's population. Issues of concern are as follows:-

- The recorded diabetes indicator performs significantly worse than the England average in three Leicestershire districts (Hinckley and Bosworth, North West Leicestershire and Oadby and Wigston) and in Leicestershire County.
- Blaby, Hinckley and Bosworth, Melton, and North West Leicestershire have significantly worse levels of excess weight in adults compared to England.
- GSCE achievement is significantly worse than England for Hinckley and Bosworth.
- Melton and North West Leicestershire have significantly worse levels of people killed and seriously injured on roads.
- North West Leicestershire remains significantly worse than England for breastfeeding initiation.
- North West Leicestershire has the 10th lowest rate nationally for cancer diagnosed at an early stage.
- Melton has one of the highest rates (5th) nationally of excess winter deaths in males.

- Melton has the 10th highest rate nationally for statutory homelessness.

Smoking Prevalence

The latest figures for smoking prevalence show that the prevalence of county smokers has fallen significantly since 2012. Back then, it was estimated that 19.3 per cent of the county population, it now stands at 13.5 per cent.

Whilst this is encouraging news it still means that there are about 60,000 smokers across the county.

'Healthier in Mind' Conversation

The 'Healthier in Mind' conversation has recently been launched by health organisations across Leicester, Leicestershire and Rutland. The intention is to engage as many local people as possible to find out what they think should be the local priorities to improve mental health support. This will form the basis of a mental health strategy for Leicester, Leicestershire and Rutland, owned not only as statutory organisations across health and social care, but with local communities and businesses.

The local focus is currently on:

- helping people to get well and stay well
- expanding support offered by community services and GPs
- giving the best quality care
- challenging mental health stigma
- ensuring mental health is prioritised in the same way as physical health

A short survey is currently available at www.surveymonkey.com/r/healthierinmind. It will close on 15 August. All the responses to the questions will be collected together and used to help shape improvements to services.

All members of the Board are encouraged to publicise this across their networks.

Mental Wellbeing Yellow Book launched by Leicestershire Partnership Trust

This pioneering yellow bound book is full of signposting and advice around mental wellbeing support, and a collection of 30 stunning poems, art and photography which won LPTs 'I feel better when' competition earlier this year across Leicester, Leicestershire and Rutland.

There will be 10,000 free copies of the LPT Yellow Book, featuring the winning entries, and promoting support for mental wellbeing, distributed across local NHS and mental health support groups, as well as local authorities, museums, cafes, and other public places.

The project is a unique collaboration with mental health arts company *rethinkyourmind*, co-founded by Peter Hirst, lead singer of local band Refuge. He

created the Yellow Book following his own experience of mental illness, with the aim of producing something that would support people with their wellbeing and recovery.

Details of all winners and their winning entries can be found here:

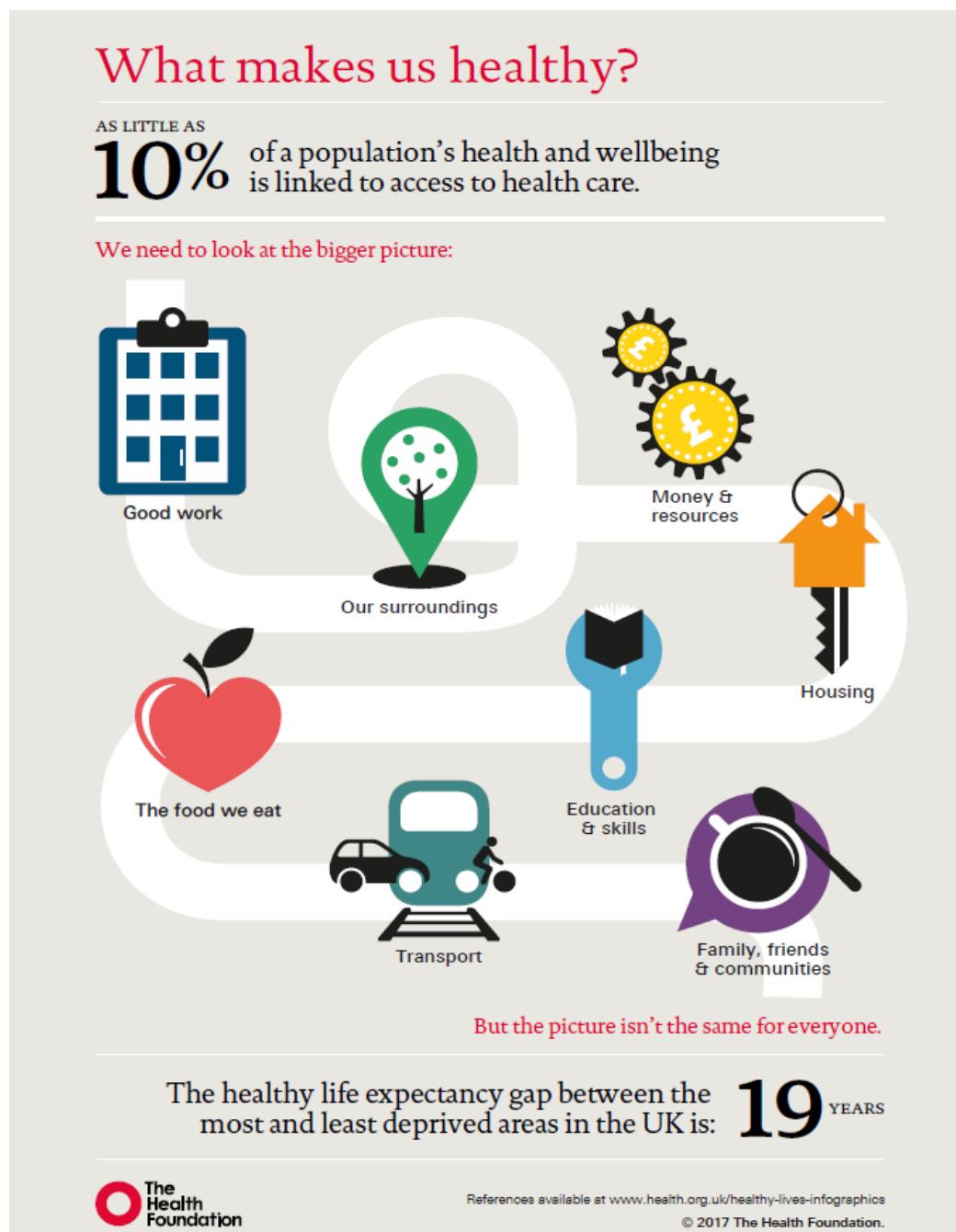
<https://rethinkyourmind.co.uk/the-lpt-yellow-book-2017/>

Please email communications@leicspart.nhs.uk if you'd like copies of the Yellow Book.

A SELECTION OF REGIONAL, NATIONAL AND INTERNATIONAL PUBLICATIONS

What makes us Healthy?

The Health Foundation has launched a series of infographics and accompanying blogs and commentaries to describe and explain the social determinants of health. These determinants include political, social, economic, environmental and cultural factors which shape the conditions in which we are born, grow, live, work and age. The first infographic shows the extent to which health is primarily shaped by factors outside the direct influence of health care and invites us to look at this bigger picture.



For more information please visit:

http://www.health.org.uk/sites/health/files/170628_Infographic_Healthy_Lives_Overarching_case_wider_determinants.pdf?utm_source=The%20King%27s%20Fund%20newsletters&utm_medium=email&utm_campaign=8409697_NEWSL_HWBB%202017-07-03&dm_i=21A8,508YP,FLWOSX,J6V2L,1

Public Health England publishes East Midlands Prospectus 2017/18

http://www.emcouncils.gov.uk/write/PHE_EM_Prospectus_2017-2018_Final.pdf

The Prospectus sets out the PHE East Midlands priorities for the coming year. The prospectus has been developed through engagement with a range of local partners and describes PHE's current work plan and achievements from last year.

PHE East Midlands is one of PHE's nine Centres including the London integrated Region and Centre. The role of Centres is to provide the PHE contribution to improving and protecting population health at local level working with Directors of Public Health, Local Government colleagues and others including NHS partners.

Recent Bulletins from NHS England

- **UK Health Care System Rankings**

https://www.england.nhs.uk/2017/07/uk-health-system-comes-out-on-top-in-new-report/?utm_source=feedburner&utm_medium=email&utm_campaign=Feed%3A+NHSCBoard+%28NHS+England%29

- **Announcement on New Ambulance Response Standards**

https://www.england.nhs.uk/2017/07/new-ambulance-service-standards-announced/?utm_source=feedburner&utm_medium=email&utm_campaign=Feed%3A+NHSCBoard+%28NHS+England%29

- **Latest National GP Survey results**

https://www.england.nhs.uk/2017/07/8-out-of-10-patients-are-positive-about-gps-new-survey/?utm_source=feedburner&utm_medium=email&utm_campaign=Feed%3A+NHSCBoard+%28NHS+England%29

Autism self assessment framework exercise

This report presents the findings from the fourth autism self-assessment exercise carried out by local authorities (LAs) between July and November 2016. It shows the LAs progress towards meeting the requirements of the Autism Act. The report is accompanied by personal stories from self-advocates, their families' and carers.

To view the report please visit

https://www.gov.uk/government/uploads/system/uploads/attachment_data/file/621233/Autism_self_assessment_framework_2016_report.pdf?utm_source=The%20King%27s%20Fund%20newsletters&utm_medium=email&utm_campaign=8409697_NEWSL_HWBB%202017-07-03&dm_i=21A8,508YP,FLWOSX,J5Y05,1

Air pollution: outdoor air quality and health

This NICE guideline covers road-traffic-related air pollution and its links to ill health. It aims to improve air quality and so prevent a range of health conditions and deaths.

For information please visit

https://www.nice.org.uk/guidance/ng70?utm_source=The%20King%27s%20Fund%20newsletters&utm_medium=email&utm_campaign=8409697_NEWSL_HWBB%202017-07-03&dm_i=21A8,508YP,FLWOSX,J5XYO,1

LGA survey of Councillor's views of STPs

This survey considers the overall experience and engagement of councillors in understanding and influencing local STP programmes, the overall influence they have on shaping health and care in their local areas, including via Health and Wellbeing Boards and their confidence in local plans delivering change.

https://www.local.gov.uk/sites/default/files/documents/1%2066%20STP%20survey%20findings_v03_web_0.pdf?utm_source=The%20King%27s%20Fund%20newsletters&utm_medium=email&utm_campaign=8429551_NEWSL_ICB_2017_07_12&dm_i=21A8,500A7,FLWOSX,J9X24,1

Latest Localis report considers where next for integration?

This report suggests that health and social care integration has a future but it is dependent on moving away from structural integration and reliance on central policy direction. It concludes that the issue of funding and financial sustainability is critical but can only be influenced locally and by building on greater person-centred care. The report makes four strategic recommendations and six policy recommendations to support integration.

http://www.localis.org.uk/wp-content/uploads/2017/07/HASC-report-final.pdf?utm_source=The%20King%27s%20Fund%20newsletters&utm_medium=email&utm_campaign=8429551_NEWSL_ICB_2017_07_12&dm_i=21A8,500A7,FLWOSX,J9405,1

The International Journal of Integrated Care (IJIC)

www.ijic.org

This is an online, open-access, peer-reviewed scientific journal that publishes original articles in the field of integrated care on a continuous basis. It contains a wealth of information comparing findings and learning from delivering integrated care across the globe.

Overview of the NHS Provider Sector

This new report considers the position of the NHS provider sector as at July 2017, and considers how the provider sector is performing, the challenges that trusts are facing, and the support they need as the sector faces a further five years of what seems likely to be constrained funding increases and rapidly rising demand.

https://nhsproviders.org/media/3281/state-of-the-nhs-provider-sector_07-17.pdf?utm_source=The%20King%27s%20Fund%20newsletters&utm_medium=email&utm_campaign=8458145_NEWSL_HMP%202017-07-11&dm_i=21A8,51ACH,FLWOSX,J8JG3,1

New Report from Macmillan focuses on how we react to cancer today.

With more and more people are living longer after cancer and many of those with cancer that cannot be cured able to maintain a good quality of life for several years, the report considers how should services be structured to support cancer as a long term condition, and not just a terminal diagnosis.

http://www.macmillan.org.uk/assets/1426915-the-c-word-macmillan-cancer-support-2017.pdf?utm_source=The%20King%27s%20Fund%20newsletters&utm_medium=email&utm_campaign=8458145_NEWSL_HMP%202017-07-11

NLGN report considers the future for local government in challenging times

<http://www.nlgn.org.uk/public/2017/a-changemaking-vision-for-local-government/>

Learning Disabilities Review of Services Bill

This private members' bill proposes a public consultation to review the provision of comprehensive and integrated services for adults with learning disabilities. It has gone through the first reading in the House of Lords and is awaiting the second reading and debate.

https://www.publications.parliament.uk/pa/bills/lbill/2017-2019/0047/18047.pdf?utm_source=The%20King%27s%20Fund%20newsletters&utm_medium=email&utm_campaign=8429551_NEWSL_ICB_2017_07_12&dm_i=21A8,50OA7,FLWOSX,J9OD5,1