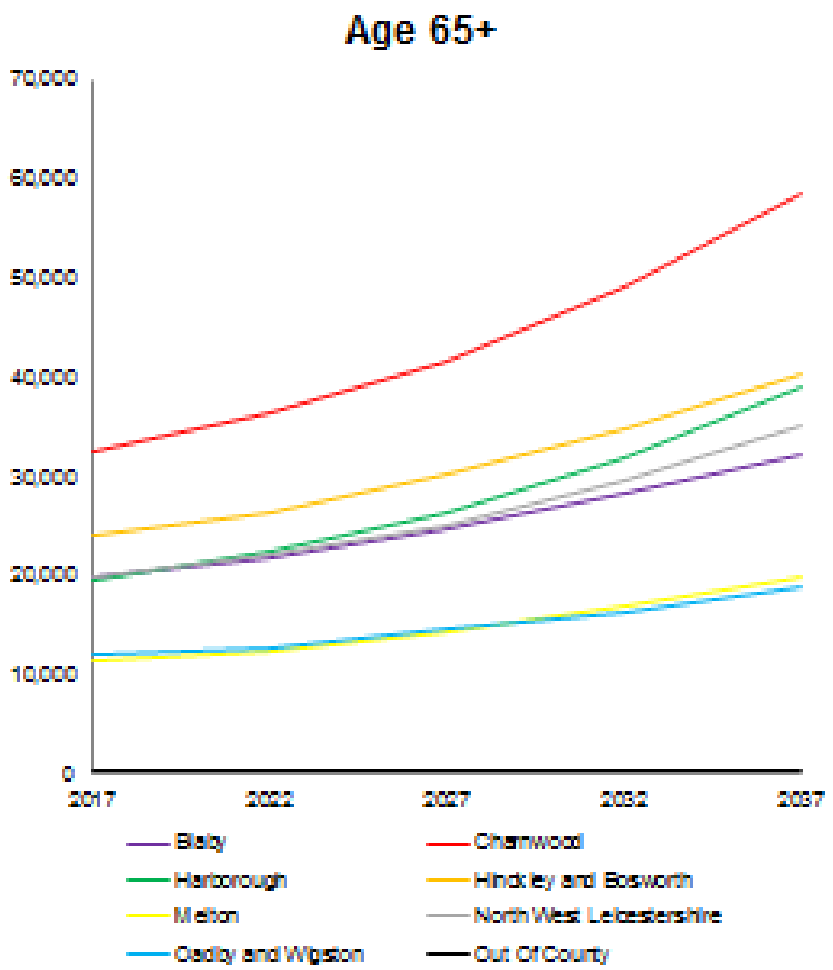
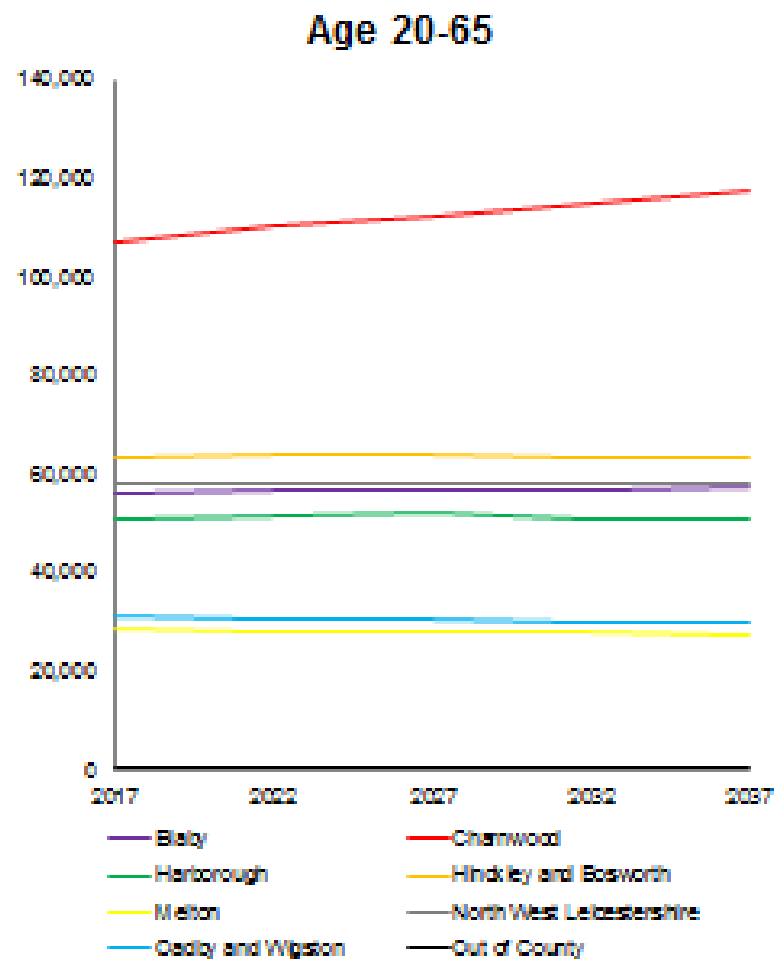
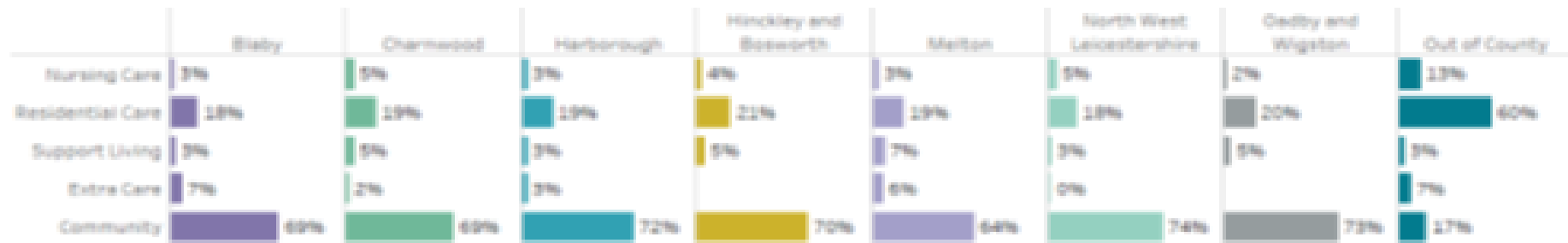


**SUPPLEMENTARY INFORMATION**

**Population Change Forecasts 2017-2037**



# 2018 - District Analysis of current placements



Based on current availability of services there is an identified shortage of:

- Supported Living in Blaby, Harborough, Melton, NW Leics
- Extra Care in Hinckley and Bosworth, NW Leics, Oadby and Wigston (but demographic pressure will require more Extra Care in all areas)
- 339 people in residential care out of county



## Strategic Change & Placement Impact



- Proposed significant strategic changes
  - Increase the proportion of under 65s accommodated in Supported Living instead of requiring Residential (15% change target)
  - Increase the proportion of over 65s accommodated in Extra Care instead of requiring Residential (30% change target)

District	Nursing			Residential			Supported Living			Extra Care		
	2017	2027	2037	2017	2027	2037	2017	2027	2037	2017	2027	2037
Blaby	27	29	32	193	166	183	32	74	81	77	184	202
Charnwood	102	113	129	374	336	383	93	180	206	33	226	258
Harborough	32	36	41	164	146	168	26	62	72	25	121	139
Hinckley & Bosworth	46	50	55	265	223	245	65	116	128	0	136	150
Melton	17	18	20	109	90	101	39	55	61	36	96	108
NW Leics.	52	56	62	190	163	182	25	64	71	0	109	121
Oadby & Wigston	15	16	17	152	121	132	40	64	70	0	83	90
<b>TOTALS</b> (including current OOA)	365	398	445	1784	1379	1544	339	668	748	211	1068	1194